

2. Riser height, rise, run, number of risers, number of treads and landing decks with header channels/ tubular sections are clearly marked.
3. Nose-to-nose dimensions
4. Slopes of the various flights w.r.t 12
5. Markings of face stringers, wall stringers, center rails and wall rails.
6. Riser lines marked evidently.
7. Riser types are marked as R1, R2, R3, etc.,
8. Flight markings are given.
9. Connection of stringer at all locations are drawn.
10. A sketch of typical riser and tread construction.

E.g.: Typical Stair Elevation.

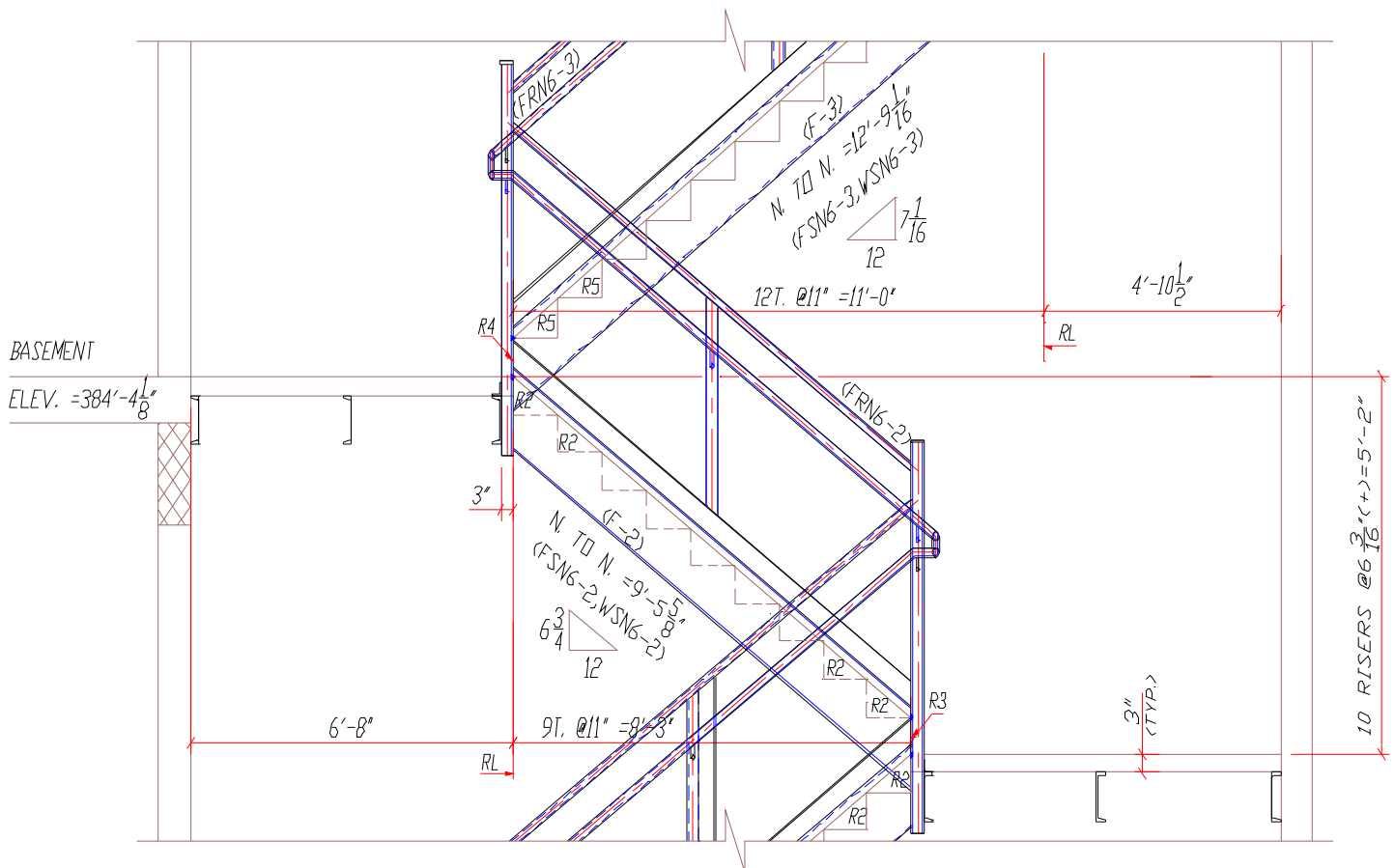


Figure 2

A typical wall rail is as shown in the fig, below:

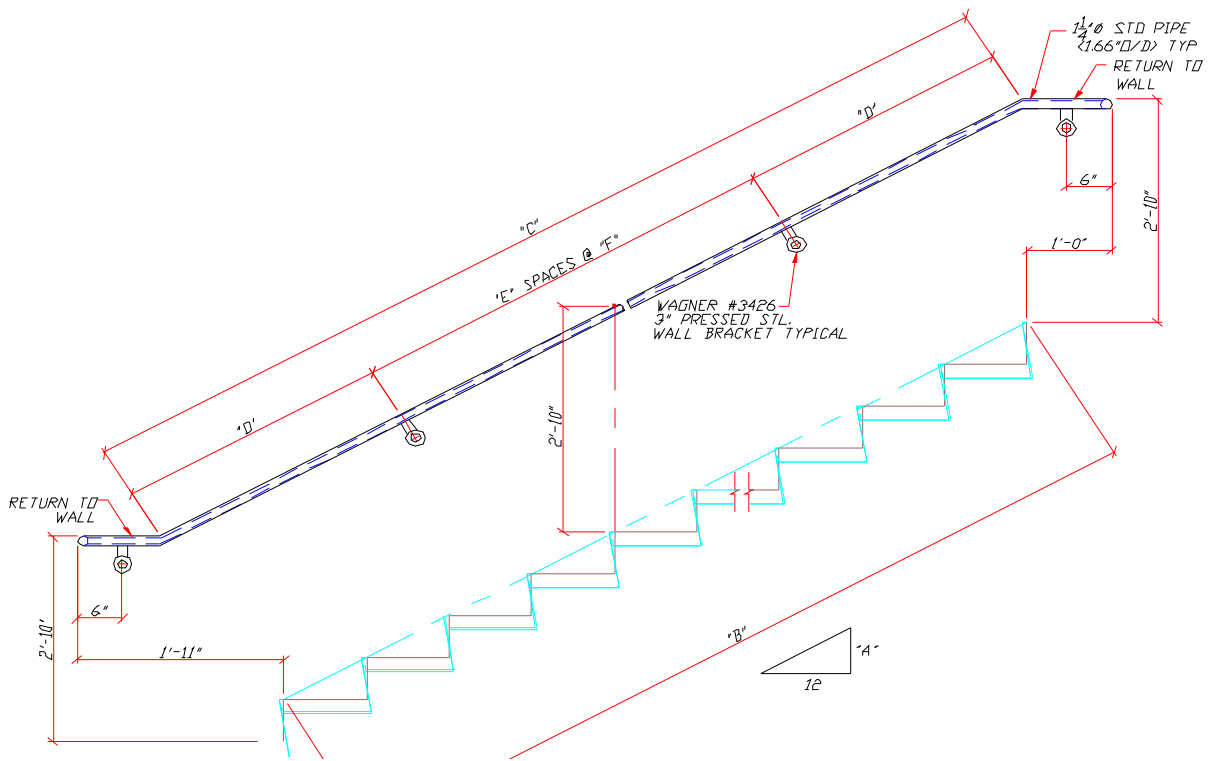


Figure 6

LEFT HAND UP WALL RAIL SCHEDULE

RAIL MARK	A	B	C	D	E	F	NO. REQ'D
WRS6-1	7	14'-10"	15'-10 ³ / ₄ "	3'-11 ¹¹ / ₁₆ "	2	3'-11 ¹¹ / ₁₆ "	ONE
WRS6-2	7	4'-2 ⁷ / ₈ "	5'-3 ⁵ / ₈ "	2'-7 ¹³ / ₁₆ "	-	-	ONE
WRS6-3	7	9'-6 ¹ / ₂ "	10'-7 ¹ / ₄ "	3'-6 ⁷ / ₁₆ "	1	3'-6 ³ / ₈ "	7
WRS6-4	7	12'-8 ⁵ / ₈ "	13'-9 ³ / ₈ "	3'-5 ³ / ₈ "	2	3'-5 ³ / ₈ "	ONE

Figure 7

1. Schedule sheet gives the following information:

- a. Stringer schedule giving details about the dimensions of risers, treads and newel posts.
- b. Center rail schedule giving details about the lengths of the rails and the spacing of the pickets.

A sample of the same is shown below:

ITEM NO.	STAIR NO	STRINGER MARK	NOSE-TO-NOSE	RISERS	TREADS	BOTTOM DETAIL	TOP DETAIL	NO. REQD.	"A"	"B"	"C"	"D"	"E"
15	S-6	FSS6-1	14'-10"	15R@ 6 3/8" (+) = 7'-11 5/8"	14T@ 11" = 12'-10"	16-16 (OPP. HAND)	8-8 (OPP. HAND)	ONE					
15	S-6	FSS6-2	4'-2 7/8"	5R@ 6 3/8" (+) = 2'-8 1/4"	4T@ 11" = 3'-8"	19-19	8-8 (OPP. HAND)	ONE					
15	S-6	FSS6-3	9'-6 1/2"	10R@ 6 3/8" (+) = 5'-3 15/16"	9T@ 11" = 8'-3"	10-10 (OPP. HAND)	8-8 (OPP. HAND)	6	6 3/8"	4'-0 3/8"	4'-3 3/8"	1'-1"	5'-4 3/8"
15	S-6	FSS6-4	9'-6 1/2"	10R@ 6 3/8" (+) = 5'-3 15/16"	9T@ 11" = 8'-3"	10-10 (OPP. HAND)	21-21	ONE					

Figure 8: STRINGER SCHEDULE

CENTER RAIL SCHEDULE

ITEM NO.	STAIR NO	RAIL MARK	NOSE-TO-NOSE	SPECIAL NOTES	"A"	"B"	"C"	"D"	"E"	"F"	"G"	NO. REQD.
<u>CENTER RAIL</u>												
10	S-1	FRS1-1	3'-3 1/8"	USE SPL.BOT.	5'-2 1/16"	3'-6 1/2"		11 SP @ 3 7/8" = 3'-6 1/2"	7 5/8	2'-10"	3'-0 3/4"	ONE
10	S-1	FRS1-2	9'-6 1/2"	-	9'-3 1/8"	8'-3"	4'-1 1/2"	12 SP @ 4" = 4'-0"	7	3'-0 3/4"	3'-0 3/4"	ONE
10	S-1	FRS1-3	9'-6 1/2"	-	9'-3 1/8"	8'-3"	4'-1 1/2"	12 SP @ 4" = 4'-0"	7	3'-0 3/4"	3'-0 3/4"	4
10	S-1	FRS1-4	9'-6 1/2"	USE SPL TOP	8'-10 9/16"	8'-3"	4'-1 1/2"	12 SP @ 4" = 4'-0"	7	3'-0 3/4"	2'-10"	ONE

Figure 9: CENTER RAIL SCHEDULE

Comparative statement of drawing Stairs & Hand rails with Concept drawings and Detailed shop drawings:

Concept drawing	Difference	Detail Shop drawing
Stair plan & Elevation	Similar to E-plan except that it does not contain detail ship marks.	E-plan
Typical call out details for Stringers	Only typical details of stringer connections are shown. It does not contain the knock down details of stairs like detail shop drawings with major and minor mark.	Detail shop drawings
Typical call out details for Hand rails	Only typical details of Handrails like special bottom or special top are shown.	Detail shop drawings
Schedule	Consists of Nose to Nose dimensions for stringers, Material requirement for stringer, Hand rail will be shown.	-
Wall rail schedule	Consists of wall rails as types like “Right Hand up”, Left Hand up” along with the schedule.	Detail shop drawing