

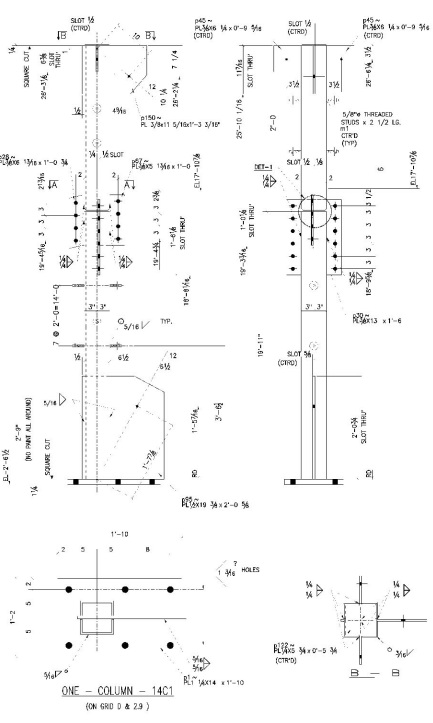
0.001-1/4

28-11 (HORIZONTAL) x 28-1/2

0.002-1/4

1-2

1-2



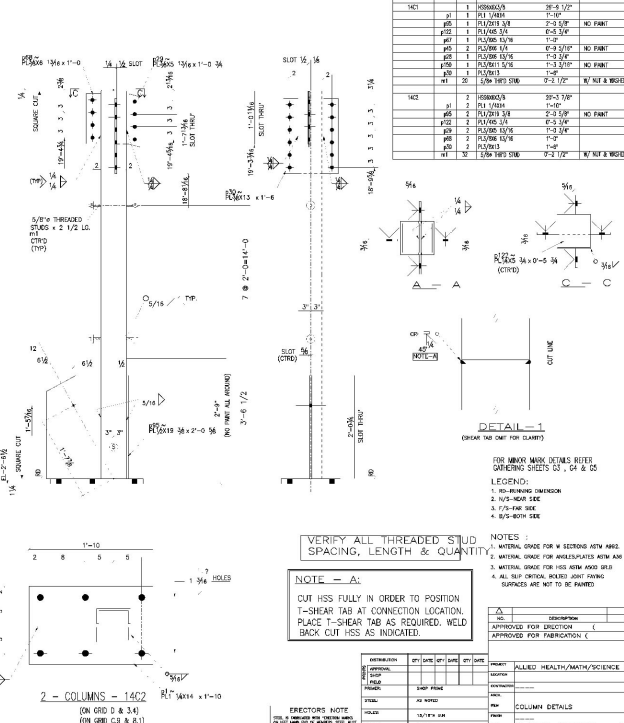
0.017-10/8

20-5/8 (HORIZONTAL) x 20-3/8

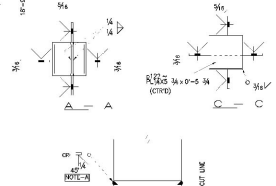
0.002-1/4

1-2

1-2



BILL OF MATERIAL						
PRICE	QTY	DESCRIPTION	LENGTH	REMARKS		
MARK	MARK		FT. IN.			
14C1		1 HSS36X36	28-5 1/2"			
	31	R11 1/4#18	1'-0"			
	32	R12 S10 3/8	2'-3 3/8"	NO PAINT		
	33	R13 5/8 3/4	6'-5 3/4"			
	34	R14 1/2#18 1/2#18	1'-0"			
	35	R15 2 1/2#18 1/2	0'-3 3/8"	NO PAINT		
	36	R16 1/2#18 1/2#18	1'-0"	NO PAINT		
	37	R17 1/2#18 1/2#18	1'-3 3/8"			
	38	R18 1/2#18	1'-0"			
	39	R19 2 1/2#18 1/2#18	0'-3 3/8"			
	40	R20 1/2#18 1/2#18	1'-0"			
	41	R21 2 1/2#18 1/2#18	0'-3 3/8"	W/ NET & WIGER		
14C2		1 HSS36X36	28-5 1/2"			
	31	R11 1/4#18	1'-0"			
	32	R12 S10 3/8	2'-3 3/8"	NO PAINT		
	33	R13 5/8 3/4	6'-5 3/4"			
	34	R14 1/2#18 1/2#18	1'-0"			
	35	R15 2 1/2#18 1/2	0'-3 3/8"			
	36	R16 1/2#18 1/2#18	1'-0"			
	37	R17 1/2#18 1/2#18	1'-3 3/8"			
	38	R18 1/2#18	1'-0"			
	39	R19 2 1/2#18 1/2#18	0'-3 3/8"			
	40	R20 1/2#18 1/2#18	1'-0"			
	41	R21 2 1/2#18 1/2#18	0'-3 3/8"	W/ NET & WIGER		



DETAIL-1
(SHEAR TAB CUT FOR CLARITY)

FOR MEMBER MARK DETAILS REFER GATHERING SHEETS C3, C4 & C5

- LEGEND:
1. RD-RUNNING DIMENSION
 2. N/S-NEAR SIDE
 3. F/S-FAR SIDE
 4. B/S-BOTH SIDE

- NOTES:
1. MATERIAL GRADE FOR W SECTIONS ASTM A588.
 2. MATERIAL GRADE FOR ANGLES/PLATES ASTM A572.
 3. MATERIAL GRADE FOR HSS ASTM A500 GR50.
 4. ALL SLP CRITICAL BOLTED JOINT SURFACES ARE NOT TO BE PAINTED.

VERIFY ALL THREADED STUD SPACING, LENGTH & QUANTITY

NOTE - A:
CUT HSS FULLY IN ORDER TO POSITION T-SHEAR TAB AT CONNECTION LOCATION. PLACE T-SHEAR TAB AS REQUIRED. WELD BACK CUT HSS AS INDICATED.

APPROVAL	DATE	APPROVAL	DATE
DESIGNER		CHECKER	
DR		ENR	
SCALE	AS SHOWN	PROJECT	ALLIED HEALTH/MATH/SCIENCE BUILDING
TOTAL		DATE	
NO. OF SHEETS	16/17	NO. OF SHEETS	16/17
NO. OF SHEETS	16/17	NO. OF SHEETS	16/17

ERECTOR'S NOTE
SEE ALL DIMENSIONS WITH TOLERANCES SHOWN.
DO NOT SCALE DIMENSIONS FROM THIS DRAWING.
ALL DIMENSIONS ARE TO FACE UNLESS OTHERWISE NOTED.
ALL DIMENSIONS ARE TO FACE UNLESS OTHERWISE NOTED.